

2022 ANNUAL REPORT





Table of Contents

- 01 — Impact Summary**
- 02 — Agricultural Projects**
- 04 — Education Projects**
- 06 — Tourism Projects**
- 08 — Product Solutions Projects**
- 10 — Working Together Projects**
- 12 — Health Projects**
- 14 — Financial Transparency**



OUR SCOPE OF WORK

creating sustainable economic and social improvement through partnerships with social ventures around the globe in line with United Nations Sustainable Development Goals

22 projects in
11 countries &
17 communities
using 13 SDGs

**SUSTAINABLE
DEVELOPMENT
GOALS**
SDGS.UN.ORG/GOALS

- new projects
- projects completed or closed*
- individuals earning a living wage or higher
- trainings or classes offered to employees, students, or community members
- students educated or trained.
- individuals gaining access to clean water

*All projects start with an agreement about their targets, goals, measured by metrics, grant amount, and a timeframe for closing the partnership with Professionals International. A typical timeframe is 4 years and can be reviewed for a continuation based on several factors. Occasionally a project close before their agreement ends, which illustrates the difficulty of starting sustainable social impact in resource deprived communities.



These projects utilize their skills and knowledge in farming and agriculture to provide solutions to future food sourcing, sustainable farming practices, as well as provide economic opportunities for local communities.

NEW

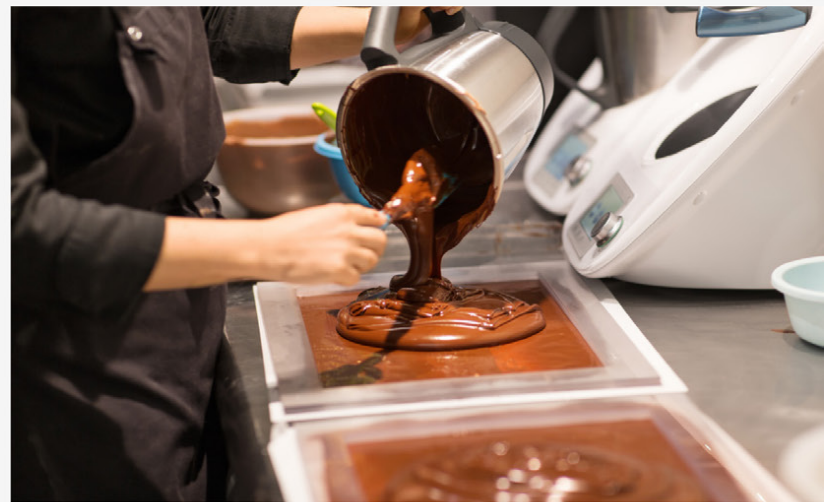


CENTER FOR ENTREPRENEURIAL FOOD PRODUCERS

exists to train young (under 40 yrs old) food producers with entry level involvement in sustainable agribusiness activities. They will train small and medium scale food producers in both production and agribusiness practices. This happens through a **15-week residential apprenticeship on a 22 acre farm** located in Indonesia. They partner with local vocational schools as an outlet for training and potential future employees.

SULAMINA CHOCOLATE

resources fair trade with local farmers and promotes best agricultural practices that leads to making and selling chocolate products in Indonesia. They purchased over **20,000 Kg of local goods** along with **employing 36 (21 full-time)**. The full-time employees receive health benefits which really helps families get the care they need. They also provided **18 training sessions in leadership and work skills**.



NEW



GREEN FIELDS FARM & NURSERY

is tree nursery in Kazakhstan that produces soft fruit saplings for regional orchardists and individuals who wish to purchase fruit trees. They were able to secure **8 hectares of land**. Two of those are for root stock while they were able to **plant 135,000 peach pits** in the remaining six. As this is their first year, they've hired **1 part-time employee** along with **37 seasonal employees** during planting seasons.



NEW



BUGKALOT COFFEE COMPANY

has established and operated a coffee plantation in the Bugkalot ancestral domain in the Philippines with an integrated, end-to-end agricultural supply chain for several years. **200 individuals are a part of the community cooperative.** They planted **86,500 coffee plants on 43 hectares of land** this last year. Most of that is on their land with some given to other local farmers. They were also able to make some upgrades to their frying facility.



IMPACT STORY BUGKALOT COFFEE COMPANY

Bugkalot Coffee is not only excited about their coffee, but they love sharing stories about their employees or even helping others find work in the bigger cities. Here are few of those highlights this past year:

"Ofelia - she has been part of the cooperative (and the coffee project) almost from the very beginning. Thru this work, she has been able to earn a living for the last 8 years, has been able to marry off children, and now has the 2nd generation of her family also involved and participating in the coffee project and the cooperative. Personally, she has also grown as part of our field teams working the coffee and also, as a leader in the cooperative."

"Anarose - a young lady who we have helped bring down to Manila to work and train at a roastery and coffee shop. She is one of several young women we are helping to gain coffee-related skills, both for their personal livelihood but also to potentially come back and help the community (& the project) in the future."





These projects utilize their skills and knowledge in Education and related academic needs to educate and provide resources which can open doors of opportunity, stability, and growth for their communities.

NEW



SOUTH ASIAN ENGLISH INSTITUTE

provides quality English instruction in India including preparation to pass the IELTS exam at affordable rates to open the door for better educational and employment opportunities, including minority groups, thereby reducing inequalities in society at large. They have **3 full-time and 1 part-time employees**. They had **54 students** enrolled in English courses this year while **270 individuals attended their free English club**.

VILLAGE LIBRARY SYSTEM

operates a system of village libraries or "reading posts" in central Sumatra (Indonesia). These provide not only easy access to books, but also act as mini-community centers where our partners and volunteers encourage children and adults to read, tutor, help with homework, and facilitate community transformation. They had **9 reading posts** currently opened. They also have **11 full-time, part-time, or temporary employees**.





PRAKASAM COACHING CENTER

is an after-school program focused on boosting literacy and reducing the dropout rate of underprivileged rural children living near the Western Ghats mountains of India by providing transportation, homework help, computer and English language training, school uniforms, textbook and school supplies, as well as a daily meal. They have **8 coaches (5 who were former students)**. **120 children received school supplies and 20 received tuition assistance.**



IMPACT STORY PRAKASAM COACHING CENTER

Prakasam provides coaches to not only help with regular learning material but has classes to train others in computers and tailoring. Their computer classes help local individuals gain the necessary skills to work in the city. Here are a couple of those examples:

"One of our graduates was able to find work in a supermarket. She graduated from Computer and English class and received her certificate. She is in charge of operating the computer system which uses point of sale scanners to check out groceries and maintain inventory levels. When we talked to her employer, we heard how important this type of education is. It opened the door for our student, and we now use this supermarket as a source for food used for our current students and their families."

"One of our students whom we hired to coach children and whom we also put through college, comes from a low cast community of farm laborers. She graduated from college and has gained a full-time position in a small private school as a teacher. She continues to coach for us in the evenings."





These projects utilize their knowledge and passion to preserve and enjoy the environment through eco-friendly tourist experiences and destinations.



WILD SUMATRA ECOTOURISM

works with rural communities to empower local guides, helping connect them with off-the-beaten-path adventurers looking for authentic trekking and cultural experiences in the Bengkulu, Indonesia region. During the pandemic, they **launched into coffee production**. Tourism has just restarted. They trained **7 local tour guides and employed/used 5 guides**. They also finished building a guest house and revisited all the tourist areas.

FATHERLAND ETHNO-TOURISM

is an ethno-tourism showcase project on an entire block of shorefront land in the heart of Lake Issyk Kul, an area designated for tourism development in Kyrgyzstan. Their goal is to help develop attractive and sustainable tourism experiences through "Yurt Conversion" trailer kits. They are in the **infrastructure phase** and are developing relations with their neighbors to adopt the vision to **reserve the coastal vegetation**. They were granted funds to **complete their septic system**.







These projects utilize their skills and knowledge along with Research & Development to provide solutions to local problems. They are often using natural resources for both a social and environmental impact.



WATER & SANITATION

supports and assists local development initiatives in Indonesia by working in partnership with the local authorities and nonprofits to help plan, design and build necessary infrastructure such as access to drinking water (not just clean water), and provide wastewater treatment solutions. This year they worked to build **15 rainwater harvesting systems to local villages**. Prior to this, they were drinking and bathing with contaminated water sources.

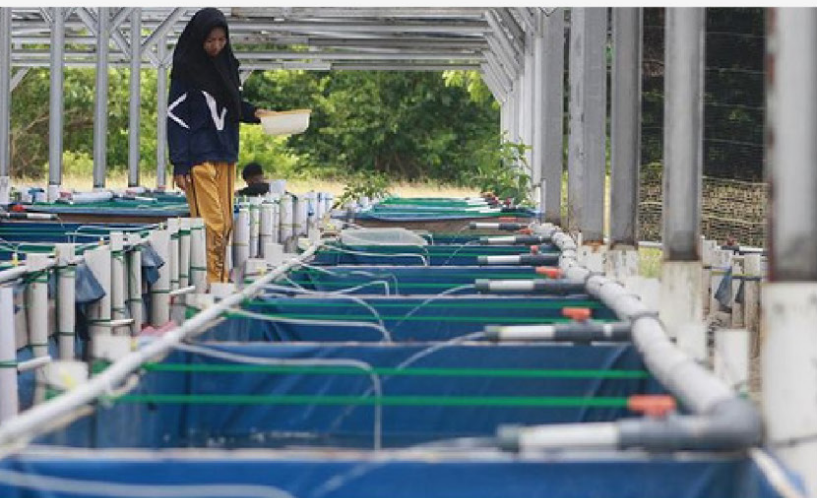
INTEGRATED FARM

incorporates livestock, bio-digester, greenhouse, and fodder crops into an integrated farming model that is scalable and accessible to Kyrgyzstan farmers. They continued to perfect their **bio-digester to produce bio-gas for the farm**. They spent much of their time bringing their **bio-fertilizer to market** at a time when chemical fertilizers were getting expensive and less conducive for the environment.



TOJ TABII JUICE PRODUCTION

Through partnerships and establishing new production facilities in Tajikistan, they are producing high quality fruit juices from second-hand fruit which provides local jobs as well as reduces food waste. Once they finally received their equipment mid-year, they were able to employ **2 full-time and 2 part-time employees** and produced **500 liters of juice from 20 tons of second-hand fruit**. Products are now at market.



SEA CUCUMBER FARM

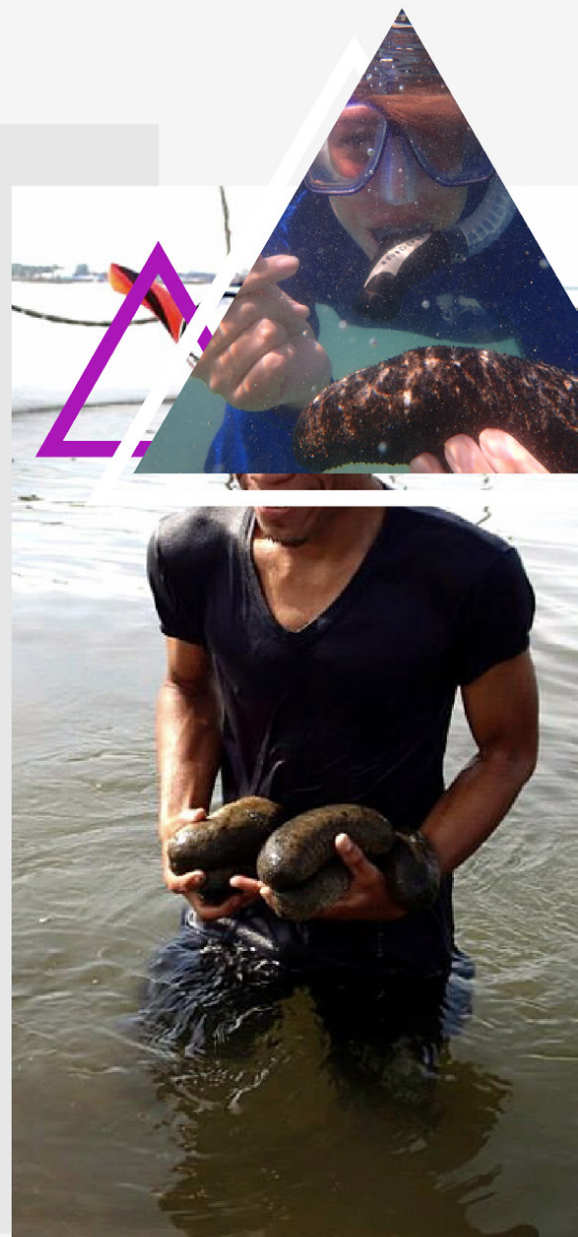
seeks to bring life to coastal communities through innovation, sustainability, partnerships, and joy in mariculture, specifically, the sea cucumber in Indonesia. They sought to raise some necessary funding to rebuilt what lacked during the pandemic. They were able to see monthly hatchery production **increase to 800 sea cucumbers a month and maintained employment for 11 full-time and 13 part-time employees.**



IMPACT STORY SEA CUCUMBER FARM

Sea Cucumber currently has their own cages in 4 different communities with 1-2 hectares at each location. Sea Cucumber has developed a partnership with the local communities, where they give 5% of their revenue (not profit) to the communities on a regular basis. Typically, this happens monthly after harvest. The community leader works with their own community to utilize these funds to meet other important needs.

"The economic activity we have stimulated has caused other private cages to be installed in 2 communities we work with, and one of those has seen some success (sales) from their cage. So the hope offered by our cage and demonstrating its effectiveness has been noticed and is being copied (increased economic activity is a good thing in these communities living around the poverty line). We are also hopeful that these independent cages would become connected with our operation as the hatchery produces stock that they could grow (in the next 12 months). We have been approached by at least three other communities in the last quarter asking to work with us."



Social Impact through WORKING TOGETHER



These projects utilize their skills and knowledge to provide collaboration, community, and often marketplace solutions as they work with individuals in vulnerable situations.



LATITUDES

exist to market and advocate for artisan-based small businesses around the world who seek to impact resource-deprived communities, particularly in poverty stricken regions. Through **21 global partners** over **350 full-time, part-time, or temporary individuals** are employed. They purchased over **17,000 products units**. They have an online store and are renovating a space in TX for a **physical location to open in 2023**.

CO-WORKING SPACE

is a members-only, innovative workspace, seeking to cater to the creative entrepreneur and freelancing community in India. They desired to do this by stimulating the growth of their members' skills and experiences in their professional fields through networking, collaboration, and developmental training events. They had **21 co-working members (10 of which were woman)** and 23 joined community activities throughout the year.



NEW



FREEDOM HUB

seeks to support the work of Himalayan Freedom Co. by developing a support center/guest house as a "hub" for future offices established in Nepal. The Freedom Hub will help further its mission, work, and purpose by setting a foundation for its "**10-10-10**" vision - 10 new offices in the next 10 years in 10 villages. They have **7 female employees from at-risk situations** and began land development on the center. **20 community individuals have been educated about their vision**.





These projects utilize their skills and knowledge to provide direct care to those with disabilities, those without adequate access to medical care, or to promote good health through activity.



HIV CARE

This on-going project provides holistic care and support to men, women, and children impacted by HIV/AIDS in India as well as medical care assistance such as lab tests and vaccines to those in need. Medical camps at orphan homes provide basic medical check-ups and needed immunizations. They held **9 medical camps** and **gave 65 children medical educational support**. They have **1 full-time and 1 part-time employee**.

DISABILITY EQUALITY*

sought to build community equality and economic growth for those with disabilities through rehab, classes, training, and consultation. They not only seek to make the disabled more functional and mobile, but to also give relief to the caretaking families. This is especially true with children. Their agreement finalized this year. They **reached 13 children and 20 adults**.



full social impact summary at prosintl.org/past-projects



full social impact summary at prosintl.org/past-projects

TABBY'S COVID RESPONSE*

Tabby's primarily employs women who are affected by HIV. Tabby's offers HIV-affected women acceptance, dignity and hope by providing job training and employment in a safe, loving community that empowers them to choose a better path and provide for their children. These **13 women made and distributed 70,045 masks to 65 communities through a \$30,000 grant**.



MAGLAJ SKATEPARK

in Bosnia and Herzegovina provides a safe recreational area for youth and families and gives teens and families a sense of ownership and pride for their community. They are also facilitating the painting of a mural project which serves to build community pride and showcases works of art within the center of the city. **The skatepark began construction earlier in the year and opened before the end of the year!**

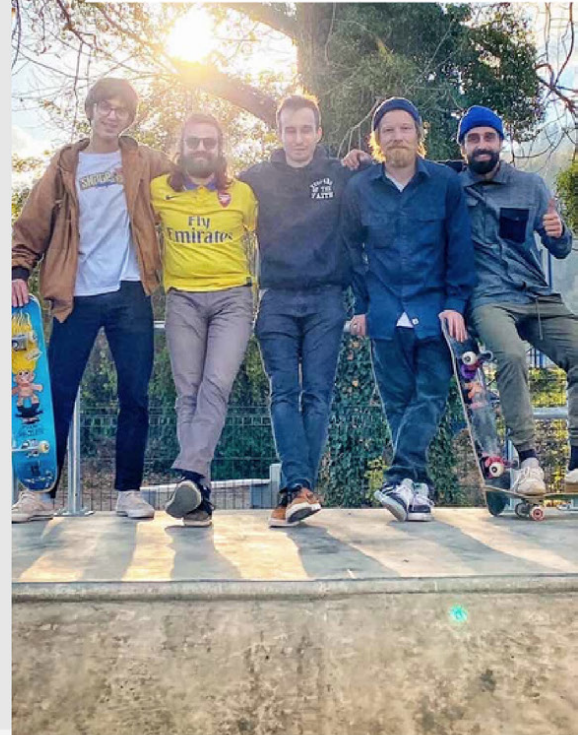


IMPACT STORY MAGLAJ SKATEPARK

Beginning in late 2021, they began to put their dream into action and by the beginning of 2022 they already had local support. After the local municipality donated a piece of land, approved the plans, and covered all the fees in early 2022, construction was underway during the summer and fall. Construction was complete in Oct 2022 and they celebrated with a Grand Opening on Nov 12, 2022.

The skatepark itself features a variety of concrete ramps, rails, and other obstacles designed to welcome skaters of various skill levels.

There were approximately 300 in attendance on Opening Day. They were also congratulated by 6 local community officials. They had been highlighted on the local news several times and congratulated multiple times for "all the good" they are doing for this community. Also, invitations have been extended for them to partner in future events (an initiative with pre-school children, a bridge-beautification project and also a recycling project have all flowed out of this seminal project.)



FINANCIAL TRANSPARENCY



CONTRIBUTED SUPPORT

\$605,245

OPERATIONS EXPENSE

\$25,600

OVERSEAS EMPLOYEES**

\$97,080

Working Together Projects
\$16,086

Health Projects
\$105,686

Agriculture Projects
\$75,440

Education Projects
\$53,365

Product Solutions Projects
\$146,770

Tourism Projects
\$88,748

**PROJECT
EXPENSES
\$486,095**

Professionals International (PRINT) is committed to financial accountability and transparency. You can find our full financial profile at Guide Star (<https://www.guidestar.org/profile/20-2016266>)

All board members are non-compensated and highly valued community leaders with diverse experiences in the realm of Finance, Business Development, HR and Non-Profits.

Every year Professionals International - PRINT's finances are independently audited by Aiken-Sanders Inc. PS. For further financial inquiries, please contact PRINT at admin@prosintl.org.

**Due to change in organizational direction in early 2022, PRINT no longer has overseas employees and focuses entirely on providing grants to projects.

Professionals International, commonly known as PRINT, is a 501(c)3 tax-exempt, public nonprofit of the United States of America, creating sustainable economic and social improvement through partnerships with social ventures around the globe in line with United Nations Sustainable Development Goals. We've been privileged to do so since 2005.

PARTNER WITH US



Double *the* Donation
matching gifts made easy

PRINT integrates with "Double the Donation" which enables donors to find out if their employers will match their donations and how much money their employers will match. Then they provide access to matching gift forms, guidelines, and instructions for a donor to easily submit matching gifts. **Find out if your employer will match your donation at prosintl.org.**



@PROSINTL.ORG



PROFESSIONALS-
INTERNATIONAL-PRINT



@PROSINTL

*Be a Force
of Change*

P.O. BOX 1018, MARANA, AZ 85653 USA
TAX-EXEMPT NONPROFIT #20-2016266

PROSINTL.ORG

