

2021

ANNUAL REPORT



PROFESSIONALS
INTERNATIONAL

TABLE OF CONTENTS

01

Current Projects

02

Upcoming Projects

03

Employees

04

Covid Impact

05

**Stories & Updates
(Community Developments)**

06

**Stories & Updates
(Caring for the Vulnerable)**

07

**Stories & Updates
(Teaching Skills & Literacy Equality)**

08

**Stories & Updates
(Collaboration & Recreation)**

09

Reach Summary

10

Financial Transparency

11

Partner With Us

PROJECTS



Our project partners include:

- Spanish/English language center along side a sports academy in a challenging area of Egypt
- English language and professional skills center in Horn of Africa, vision towards an international school
- Apple juice production and central branding/selling in Tajikistan
- Employee and employer training for adults with disabilities in Southeast Asia
- Sea cucumber farming in Indonesia
- Cacao processing and chocolate manufacturing in remote island of Indonesia
- Burning cow manure in bio-digester to heat greenhouses for vegetable production in Kyrgyzstan
- and more on our website: prosintl.org

18 PROJECTS 8 COUNTRIES

UPCOMING ...



We're excited to partner with four new businesses in 2022:

- Services to adults with disabilities and consulting to local organizations in Tunisia
- English and professional skills center in India
- Coffee farming with local, remote community in the high mountains of the Philippines
- Cashew processing and export in remote island of Indonesia

4 UPCOMING 4 COUNTRIES

EMPLOYEES



Our global employees include:

- Developing curriculum, teaching and mentoring midwifery in Horn of Africa, some students from Kenya
- Provide leadership to locally-run organization in Indonesia that makes wheelchairs out of recycled material
- Medical care to people affected by HIV and orphans in India (huge COVID-19 relief provided oxygen tanks)
- Education and professional skills training in Kazakhstan
- Developing, manufacturing, and selling affordable and reuseable women hygiene products in India
- Exploring clean water and sanitation engineering and educational projects in India
- Leadership oversight and training to expats working in places like Pakistan, Afghanistan, Tajikistan, and area

20 EMPLOYEES 5 COUNTRIES

COVID IMPACT

04

PROVIDING AID AND MAKING ADJUSTMENTS

As COVID cases spiked in India during the middle of 2021, hospitals became overrun with patients and supplies dwindled. Projects and Employees in those areas adapted, pivoted, and made changes to help.

\$51,000

COVID RELIEF FUND

HIV CARE ADDS COVID CARE

HIV Care, our medical project in India, requested aid and donors responded by raising \$51,000 that were used to purchase 22 oxygen concentrators, 56 pulse oximeters to vulnerable individuals, food and medicine for at home COVID patients, IV's, blood draws, and more.

Our professional on the field and staff oversaw IV's, oral medications, and labs for at home COVID patients when hospitals were overflowing and helped coordinate with hospital admissions for ambulances, funeral arrangements, and plasma transfusion.

47,321

MASKS MADE

TABBY'S PIVOTS TO MAKING MASKS

Tabby's employs women affected with HIV to create stuffed animals out of bright and colorful saris. When COVID hit India in May of 2020 Tabby's pivoted their business model to creating and distributing masks to the vulnerable.

In 2021 they employed 14 women to create 47,321 masks which were distributed to women, children, villagers, and others in need within 30+ communities.

450 &
477

RECEIVED RELIEF

PRAKASAM SUPPLIES LOCAL NEEDS

Prakasam Coaching Center in India responded to their community's needs during COVID by distributing food relief supplies and medical/housing support. 450 households received COVID relief food supplies and 477 individuals, unemployed by COVID, received support for medical care and housing.

STORIES & UPDATES

COMMUNITY DEVELOPMENTS

Social impact takes on many different forms including creating jobs and stimulating economic growth while utilizing the local natural resources available.

BORNEO WATER & SANITATION



When COVID and major flooding caused the country's government to end much of their support for infrastructure, Borneo switched gears as well. They partnered with a local NGO to distribute COVID relief supplies, clothes, sleeping mats, and food to neighboring villages.

They also helped to design and construct rainwater harvesting systems and hydroponic/aquaponic agricultural solutions. Each harvesting tank provides year round water for a family. **10** have been constructed so far.

SULAMINA CHOCOLATE



With several years now under their belt, they currently employ **55** individuals (**11** full-time). Yet it isn't all about making and selling chocolate goods. Through consignment agreements and microloans, partnering with local farmers, providing management and carpentry training, and giving out plant seedlings to synergize the companies needs for particular fruit, they are empowering locals to see and embrace opportunities.

TOJ TABII JUICE



NEW

As a new project, they have been busy in the early stages of searching for facilities, settling on equipment, networking with local producers, trying different recipes, evaluating quality and price, and seeking innovative packaging.

They have been able to hire one full-time employee who has been able to support his mother in the hospital and be financially prepared for the future. They also sold their first **200** liters of juice and utilized **2 tons** of secondhand fruit to reduce local food waste.

ICA FARM



Along with COVID, a major drought in Central Asia hurt efforts to feed livestock, recycle their waste in bio-digesters for gas production, and to sell meat as a source of income. Yet, there was an increased desire in local farmers for bio-fertilizer as chemical fertilizer became more expensive and is causing soil exhaustion. Three years of experimentation led to better bio-digester prototypes which produced enough gas for cooking and heating the farmer's home.

STORIES & UPDATES

CARING FOR THE VULNERABLE

Promoting social and economic equality includes providing care at birth as well as care to those marginalized because of their disabilities.

GLOBAL FEATHER REHAB



Global Feather seeks to build community equality and economic growth for those with disabilities through rehab, classes, training, and consultation. **10 children** with disabilities showed improved functional independence, **12 caregivers** gained skills to care for children with disabilities. **8 adults** with disabilities demonstrated improved ability or ease mobility to sustain job performance.

“
When I arrived, "Grace" was sitting bent over and could not move her arms or hands because of the pain. Her face was wrinkled with pain, far beyond her 50+ years. She could no longer work or even wash her family's clothes without extreme pain. As I showed her exercises and spoke hope that she could get better, her face began to brighten. Before I left, she was able to sit upright and even begin to move her arms. Her words said what I already was seeing on her face: "Before my heart was in pain, now my heart is comfortable."
”

MIDWIFE MENTORING



Providing side-by-side mentoring to midwives and students to create better protocols and practices in caring for a mother and her baby during delivery. COVID shut down most classes. Attention was turned to developing nursing documents, one-on-one mentoring of clinical assessment skills, and participating in several baby deliveries with live teaching moments. By teaching the students better ways to handle deliveries, the hope is to create a ripple effect of improved birth outcomes and decreasing birth trauma related to unnecessary episiotomies.

EMPLOYEE SPOTLIGHT



Delivering wheelchairs, walkers, and canes to remote villages and providing the necessary training on the use of such devices was also impacted by COVID shutdowns. Although the numbers were below normal, they were able to have a handful of personal development sessions and dozens of home visits. Distributing food packages became a priority as many people lost their businesses and jobs, and wondered where their next meal would come from. Any outdoor projects continued as they reached relatively healthy individuals in outdoor environments.



STORIES & UPDATES

TEACHING SKILLS & LITERACY EQUALITY

Access to equal and quality education is a large social need in many regions of the world. Not only covering the basics but teaching higher academic skills to advance developing countries.

PRAKASAM COACH CENTER



COVID caused a complete shutdown of all centralized programs. Older students became coaches to younger kids in local villages. They hired several unemployed workers to support local families experiencing hardship due to COVID. These worked on projects at the institute and helped distribute food to over 450 families, Prakasam helped several families with medical expense, housing, and other basic needs. They were still able to maintain some academic home visits or outdoor sessions.



Ten children and one college student were able to stay in their classes because we met their tuition needs. During the pandemic, many parents lost their jobs and could not pay the tuition required for school. By paying for the tuition portion of their school fees we provided income to the school which they used to give a partial salary to the teachers and others still on staff. Several staff had not received anything for two months.



VILLAGE LIBRARY SYSTEM



Village Library System is a larger and active project with 8 full-time and 3 part-time employees, 11 village libraries or reading posts, and sponsoring over 116 children. With COVID's up and down levels, some centers temporarily closed and shifted to phone calls and smaller groups. Nearly all the village library systems were open with some capacity by the end of 2021.

EMPLOYEE SPOTLIGHT



Teaching at a university level on Public Health has had real-time practical application with COVID. It's not only teaching information in a classroom setting but preparing students to improve the overall health and health infrastructure of the country. Several former students are now working with the Ministry of Health and others working in research with under-studied health concerns.



STORIES & UPDATES

COLLABORATION & RECREATION

Although projects are serious about their business and social impact, some intentionally design ways to collaborate with others or build community and relax.

LATITUDES MARKET



Latitudes provides a centralized marketplace to advocate for 20 artisan-based small businesses in 11 countries, particularly in poverty stricken regions. These businesses employ over 350 individuals either full-time, part-time, or temporarily. They all earn a local living wage or higher. Latitudes purchased over 6900 units of product in 2021 to sell. Both physical locations in the United States struggled during COVID but have bounced back with record sales. They continue to sell products online.

“

Tian has dabbled in many vocations in her lifetime in a variety of fields. She first learned about Thai Village when she saw a woman stitching a Thai doll while sitting in a hospital waiting room. She was drawn to learn more about this handicraft work and immediately signed up for a vocational training session. Now, Tian works with Thai Village and is happy to be a part of our welcoming community. She has learned many new hand-sewn designs and relies on this work as her livelihood.

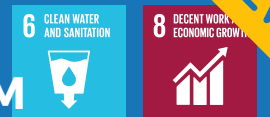
”

MAKER'S SPACE

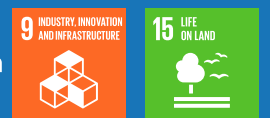


With a second country-wide lockdown due to COVID, the co-working space struggled to stay open. They ended up closing half their space to remain afloat financially. Co-working space was an important setting for remote workers who found it difficult to work from home and who hungered for community networking and connection. It took several weeks after the end of the lockdown for a few members to return. Maker's Space learned many lessons and creative ways to reconnect and rebuild, including a successful cross-cultural holiday event.

FATHERLAND ETHNO-TOURISM



Their goal is to protect land and natural habitats through a bio-reserve and provide economic growth through eco-friendly tourism. They were able to raise the necessary funds to secure land for the tourism destination. They worked with another NGO who secured a plot next to them to increase the bio-reserve. Their plan is to build and rent out enough Yurts to tourists to provide self-sustainable income for 4 local families.



REACH SUMMARY

TOTAL PROJECT & EMPLOYEE IMPACT

Social impact is about real people impact. Each number represents a real man, woman, or child. Projects and employees have a vivid impact on individuals, families, and communities.

472

EARNING A LIVING WAGE OR HIGHER

EARNING A LIVING WAGE OR HIGHER

472 local individuals were employed either full-time or part-time. They earned a local living wage or higher.

This directly impacts families and spurs other local economic growth.

EDUCATED, TRAINED, OR MENTORED

771 local individuals were educated, trained, counseled or mentored in local schools, hospitals, on the job training, universities, coaching centers, and more.

771

EDUCATED, TRAINED, MENTORED

BENEFITED ECONOMICALLY

108 local individuals benefited economically. Some partners have profit sharing which impacts local community projects.

Some provide spaces, goods, or services which directly impacts other local businesses.

RECEIVED MEDICAL CARE

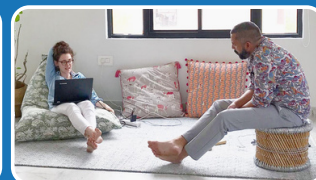
68 individuals received medical care (non-COVID related) such as medical check-ups, lab tests, vaccines, physical therapy, mobility aids, trainings, and basic medical care items.

108

BENEFITED ECONOMICALLY

68

RECEIVED MEDICAL CARE



FINANCIAL TRANSPARENCY

Professionals International (PRINT) is committed to financial accountability and transparency. You can find our full financial profile at Guide Star (<https://www.guidestar.org/profile/20-2016266>)

All board members are non-compensated and highly valued community leaders with diverse experiences in the realm of Finance, Business Development, HR and Non-Profits.

Every year Professional International - PRINT's finances are independently audited by Aiken-Sanders Inc. PS. For further financial inquiries, please contact Kathy at admin@prosintl.org.



CONTRIBUTED SUPPORT

\$565,495

TOTAL EXPENSES

\$521,298

PROJECTS EXPENSE

\$326,113

OVERSEAS PAYROLL

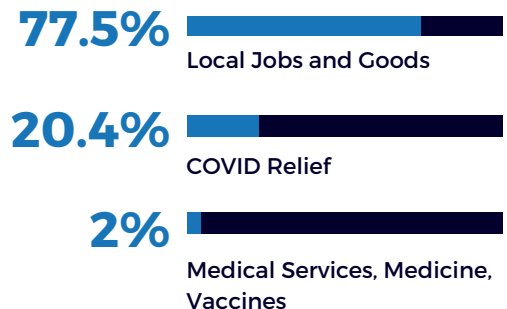
\$122,285

OPERATIONS EXPENSE

\$72,900

FUNDS SPENT

\$249,875



Professionals International, commonly known as PRINT, is a 501(c)3 tax-exempt, public nonprofit of the United States of America, creating sustainable economic and social improvement through partnerships with social ventures around the globe in line with United Nations Sustainable Development Goals. We've been privileged to do so since 2005.

**SUSTAINABLE
DEVELOPMENT
GOALS**

PROSINTL.ORG



PARTNER WITH US

OUR IMPACT IS YOUR IMPACT

THE GIVING CYCLE

IT BEGINS WITH AN 

Idea

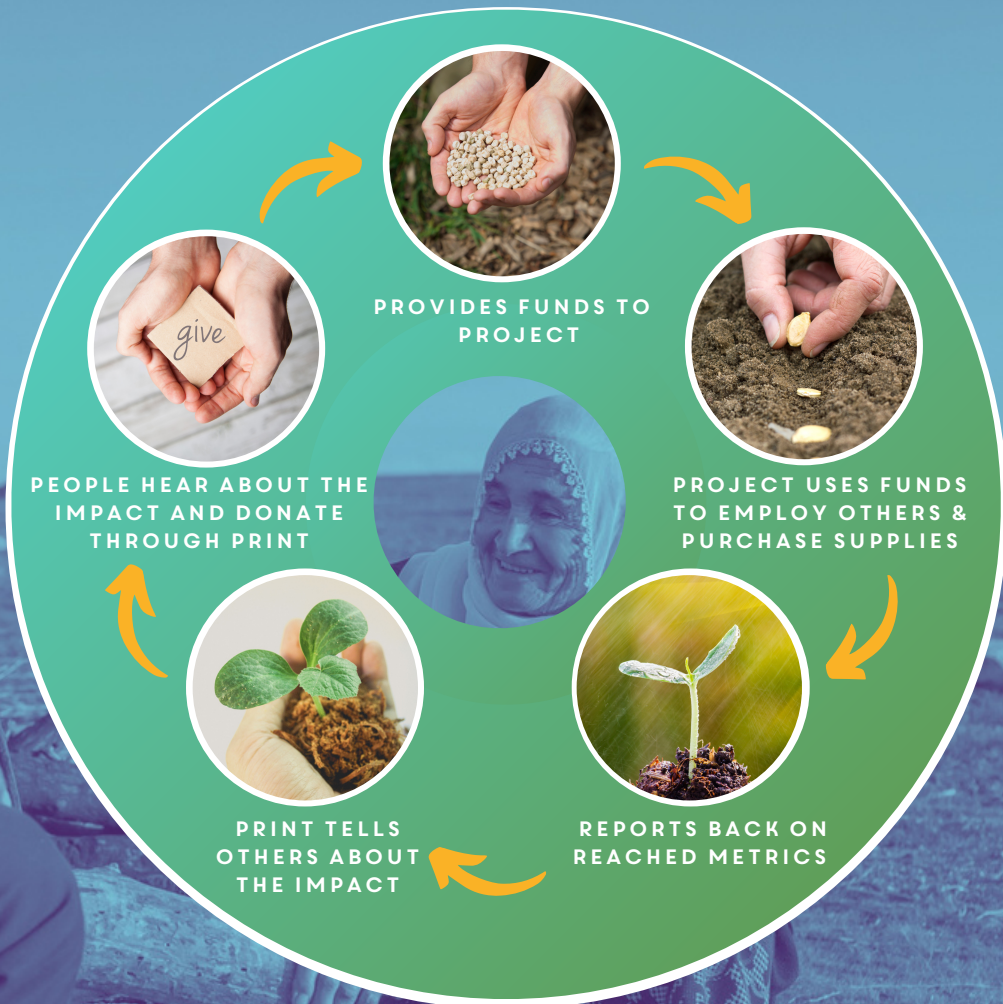
"LET'S DISTRIBUTE MASKS TO VULNERABLE PEOPLE."

THAT TURNS INTO AN **ACTION**

 JOINS PROFESSIONALS INTERNATIONAL

THAT LEADS TO AN **IMPACT**

"WE'VE DISTRIBUTED OVER 20,000 MASKS!"



-  PROFESSIONALS-INTERNATIONAL-PRINT
-  @PROSINTL.ORG
-  @PROSINTL
-  @PROSINTL_PRINT
-  PROSINTL.ORG



PRINT integrates with "Double the Donation" which enables donors to find out if their employers will match their donations and how much money their employers will match. Then they provide access to matching gift forms, guidelines, and instructions for a donor to easily submit matching gifts. **Find out if your employer will match your donation at prosintl.org.**

P.O. BOX 1018, MARANA, AZ 85653 USA
TAX-EXEMPT NONPROFIT #20-2016266

